

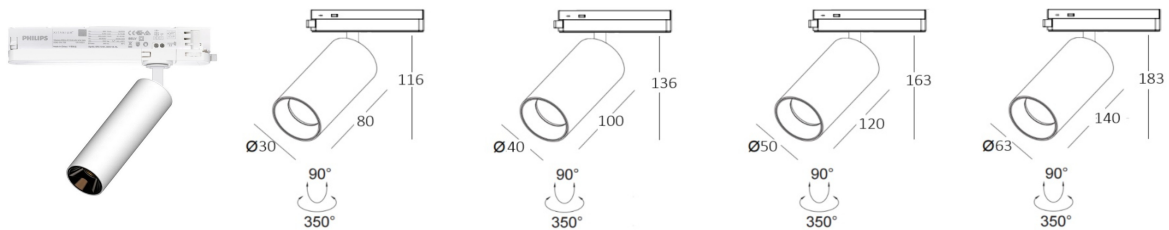
INTERIOR LED TRACK SPOTLIGHT

L09114



- IP20
- CLASS III
- 3-phase Track or DALI Track Rails
- Aluminium lighting fixture, powder coated.
- Flicker Free I UGR<19
- Eyes friendly CE certificate RoHS standard
- CRI90 3SDCM famous brand COB LED
- DALI Triac I 0/1-10V I DALI dimmable
- 360°rotation and 90° adjustable
- Warranty 5 Years

HIGH LUMINOUS EFFICIENCY AND UNIFORM DISTRIBUTION.



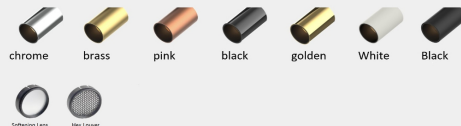
Code	System Power W	Output Lumen lm	Dimension mm	Cut Hole mm	Power Supply mA
L09114 -6	6W	550lm	Ø 30x80xH116mm	Ø mm	150mA
L09114 -10	10W	900lm	Ø 40x100xH136mm	Ø mm	250mA
L09114 -15	15W	1300lm	Ø 50x120xH163mm	Ø mm	350mA
L09114 -20	20W	1700lm	Ø 63x140xH183mm	Ø mm	500mA

FEATURES

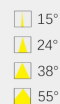
Track spotlight, aluminium lighting fixture, Integrated cooling system to ensure the spotlight long lifetime. Achieved DALI dimmable(NFC), An ideal solution for accent lighting. The fixture allows 360°rotation and 90° adjustable make the spotlight highly flexible and easy to handle, the light is emitted exactly where you want it. Specialized optical filters can be ordered. The light spots were natural transition, clear and soft. 3SDCM CRI>90, The standard product comes in Black or White. Customized power changes are possible depending on the request and the quantity. PRO-UAD640 TCI

Integrated LED Driver NFC
 6W 150mA
 10W 250mA
 15W 350mA
 20W 500mA

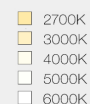
Accessoires



Beam Angle

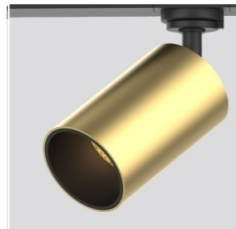
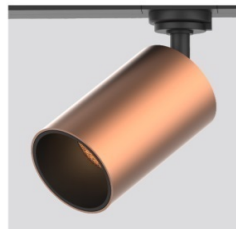
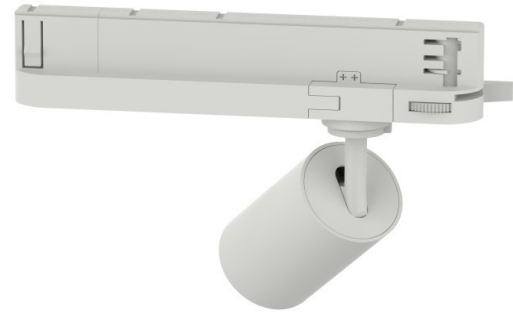


Color Temperature



Finishes





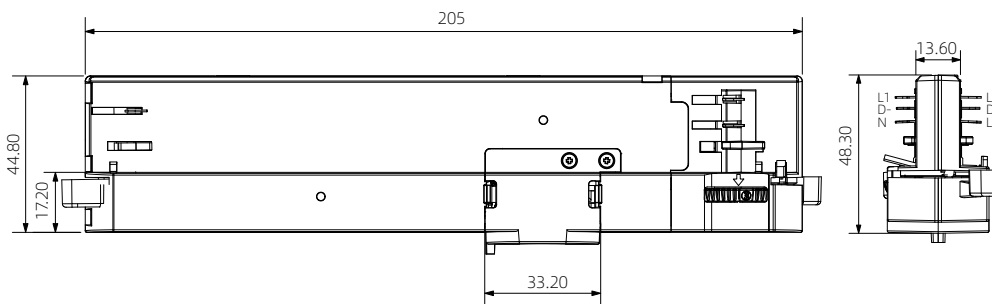
Datasheet | 6 wires 3 circuits DALI ultimate adaptor - 40W



Picture for reference only

Product code	PRO-UAD640
Color	Black / Grey/ White
Color code	RAL 9011/7040/9010
Main materials	PC UL94V0+Copper
Inner package QTY	N/A
Unit weight	0.16 Kg
Outer package QTY	20 PCS
Gross weight	3.7 Kg
Package size	245*255*225 mm
Voltage & Max.load	220~240Vac,50/60Hz,50N

Dimensions (mm)



Notes:
Apply to POWERGEAR 3
circuits DALI track system

Screws enclosed,
nipple optional

Max units per circuit breaker:
B16:76
B10:47

Features:
The product supports DALI
Dimming.
Amplitude dimming: 1%...100%.
Fast programming/current setup
through NFC.



NFC Current Adjustment



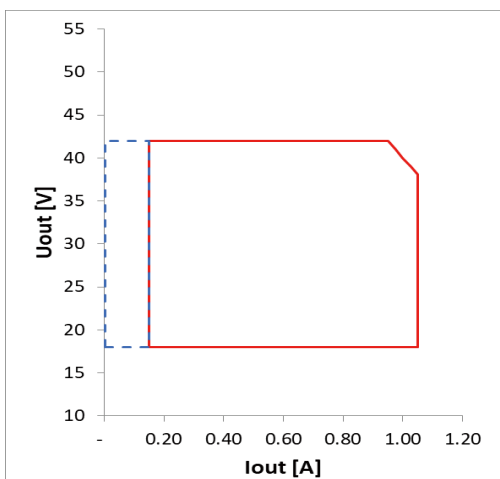
Specification

Voltage (Uin)	Nominal Voltage:220~240Vac; AC Voltage:198-264Vac;Maximum voltage:320Vac,2h
Current (Iin)	210mA Max. @Full Load, 230Vac
THD	< 10%, @Full Load, 230Vac 50/60Hz
Power factor	> 0.95, @Full Load, 230Vac 50/60Hz
Efficiency	86% @Full Load , 230Vac
Inrush current	< 36A(50% Ipeak, twidth=1.5us@AC230V)
Voltage (Uout)	18-42Vdc, Max Voltage 60Vdc Max.
Current (Iout)	150-1050mA ±5%, Adjusted by NFC: The default setting is 20W, 500mA. Any other current requested, please contact the sales to set them before shipment.
Power (Pout)	40W@Ta ≤ 35°C
Standards	IEC 61347-1; IEC 61347-2-13; IEC 62384; IEC 62386; IEC 61000-3-2; IEC 61000-3-3...
Ta / Tc:	0°C~35°C / 80°C
Surge:	L/N LN/PE acc to. EN 61547 Clause 5.7
Protection	Short-circuit, Open-circuit, Overvoltage
Expected Lifetime	50.000 hours @ Tc 70°C

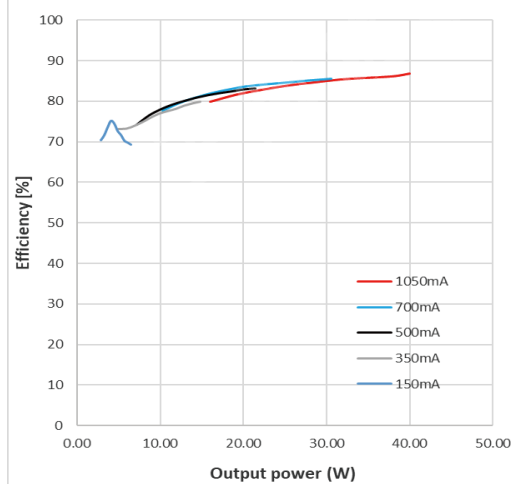
Current Ripple < 3%
(< 1000Hz, ripple/average)

Driver Typical Specification

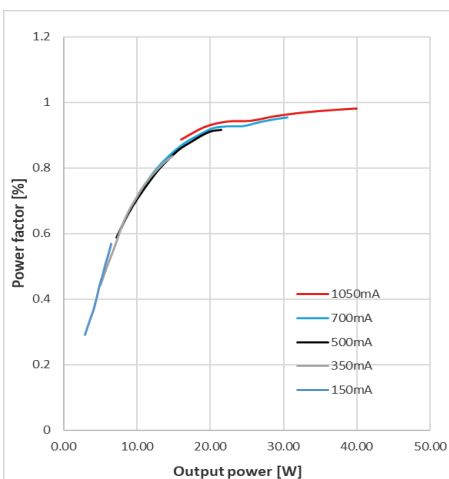
Typical Operating window



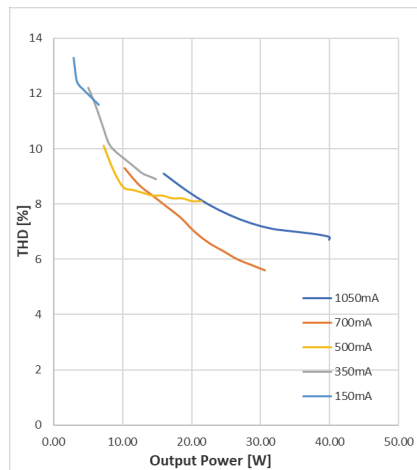
Typical Efficiency vs Load (230V/50Hz)



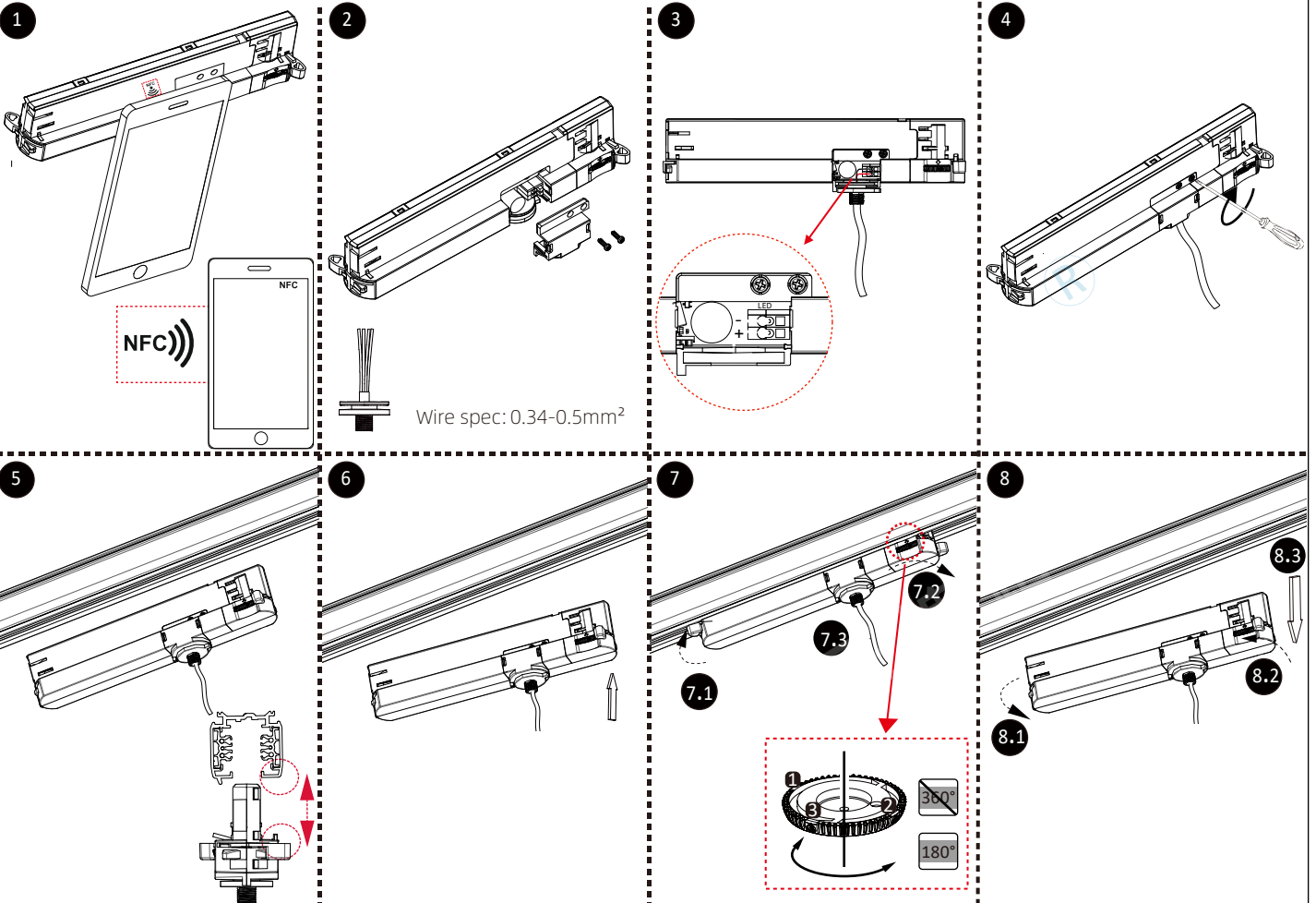
Typical Powerfactor vs Load



Typical THD vs Load



Installation please read carefully before installing



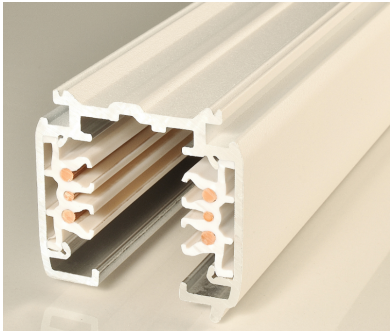
Troubleshooting

1. The luminaire power abnormal: Please check and ensure the NFC settings parameters are correct;
2. NFC cannot be read and written: Please ensure the NFC is on in your device, and check if it is put in the NFC sensing area as shown in Figure 1.
3. The in-track adaptor doesn't work: Please check the "+" and "-" polarity of the luminaire, do not reverse the connection, and ensure the wiring is firm;
4. The handle rotates difficultly: There is directional requirement when installing the product, please refer to Figure 5 and 6;
5. Unable to dismount from the track: Please refer to Figure 8. It cannot be dismounted if the operation sequence is wrong.

Disclaimer

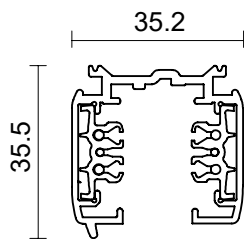
1. It is forbidden to apply paint, glue, etc. to this product;
2. It is recommended to use POWERGEAR track system or the promised brand track;
3. This product is suitable for indoors, not outdoors;
4. This product has passed the safety and electromagnetic compatibility certification, because the margin of electromagnetic compatibility is related to the length of the lamp wire and the wiring method, please reconfirm before use;
5. If the structure or wiring of this product is not used/modified according to the instructions, resulting in damage to this product or related products, POWERGEAR doesn't continue to maintain the after-sales commitment;
6. Product optimization and version upgrade will not be prior noticed. Please refer to the actual product received. If you have any questions, please contact our sales staff in time;
7. POWERGEAR reserves the right of final interpretation of this product.

Datasheet | 3 Circuits dali track-1M (1000mm)



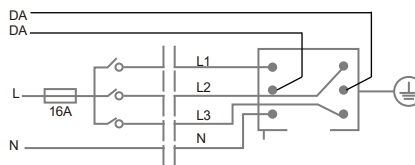
Product Code	PRO-0610-W
Color	White RAL 9010
Product Code	PRO-0610-S
Color	Silver RAL 7040
Product Code	PRO-0610-B
Color	Black RAL 9011
Main materials	Copper+Aluminum
Inner box/Outer box	1/6 pcs
Net weight per piece	960 g
Rated voltage per circuit	220-250V/10A (EU) ,120V/20A (US)

Dimensions

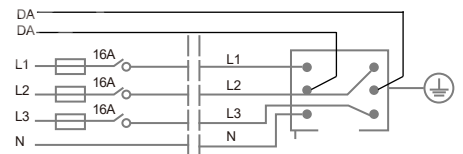


Connecting Diagram

3 circuits dali track system

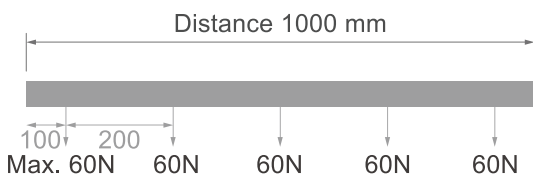


1 phase 230V 16A Max.



3 phase 230V 3*16A Max.

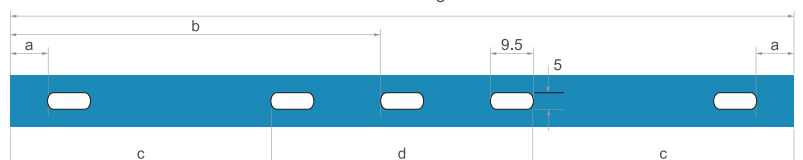
Mechanical load diagram



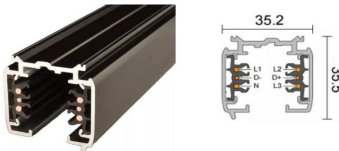
Fixing point dimensions

L / mm	a / mm	b / mm	c / mm	d / mm
1000	125			
2000	125	995		
3000	125		914	1172
4000	125		1247	1506














L=Track length



6 wires 3-circuit Triac/Phase/DALI Track Rails - Surface Mounted | Suspended

image	code	description	
	PRO-0610	L1000mm Surface Mounted Suspended track rail	
	PRO-0615	L1500mm Surface Mounted Suspended track rail	
	PRO-0620	L2000mm Surface Mounted Suspended track rail	
	PRO-0630	L3000mm Surface Mounted Suspended track rail	

Connectors for the surface mounted and suspended version track rails

	PRO-D631L/R	power feed	
	PRO-0432	end cap	
	PRO-D633	I straight connector invisible version	
	PRO-D634	I straight connector visible version	
	PRO-D635L/R	L connector fixed version	
	PRO-MD638	L connector adjustable version	
	PRO-MD635	connector flexible version A	
	PRO-D636L1/R1/L2/R2	T connector fixed version	
	PRO-MD636L/R	T connector adjustable version	
	PRO-D637	+ connector	
	PRO-D639	connector flexible version B	
	PRO-EZ0447	Buckle and Suspension Rod (M6xL1000mm)	
	PRO-EZ0448	Buckle and the Suspension Wire (L1500mm)	
	PRO-EZ0448	Buckle and the Suspension Wire (L2000mm)	
	PRO-EZ0448	Buckle and the Suspension Wire (L3000mm)	
	PRO-EZ0448	Buckle and the Suspension Wire (L4000mm)	
	PRO-EZ0449	Buckle and the Suspension Wire (L2000mm)	
	PRO-EZ0449	Buckle and the Suspension Wire (L3000mm)	
	PRO-EZ0449	Buckle and the Suspension Wire (L4000mm)	