

## INTERIOR LED TRACK SPOTLIGHT

L09115



- IP20
- CLASS III
- 3-phase DALI Track Rails
- ECO Energy Saving. | CE certificate | RoHS standard
- Aluminium extrusion material and powder coating.
- UGR<19 | European Standard.
- CRI90 2-3SDCM CITIZEN COB LED
- DALI dimmable | Flicker Free | Built-in
- Double adjustability 90°adjustable 355°rotation
- Warranty 5 Years

### EXCELLENT COOLING SYSTEM AND UNIFORM DISTRIBUTION



Code	System Power W	Output Lumen lm	Dimension mm	Cut Hole mm	Power Supply mA
L09115 -11.5	11.5W	960lm	Ø 62xH170mm	Ø mm	270mA

### FEATURES

Aluminium extrusion material and powder coating. -built in DALI Driver -economical version - Excellent cooling system.5 years warranty. Double adjustability 90°adjustable 355°rotation, An ideal accent lighting in residential | Villa or commercial areas. High Definition optical lenses in thermoplastic material. -Uniform distribution. -Specialized optics( reflector ) and optical filters can be ordered. -The basic model comes in white and black colors. - The metal baffle comes in multiple colors, Black | White | Gold. Customized color finishing are possible depending on the request and the quantity to match the specific look and feel of your design.

#### Built-in Driver

11.5W 270mA  
EUP10D-1HMC-0-120

#### Accessoires



#### Beam Angle

- 15°
- 24°
- 36°
- 60°

#### Color Temperature

- 2700K
- 3000K
- 4000K
- 5000K
- 6000K

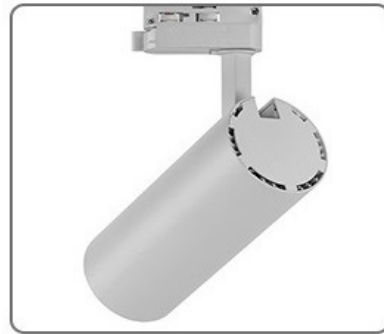
#### Finishes

- Black
- White
- Customized



# Angle adjustable

Flexible adjustment of Angle and orientation to achieve accurate lighting



### EUP10D-1HMC-0-120(Product No.: 3.04.001575)

#### Summary

EUP10D-1HMC-0-120 is a 10W AC/DC constant current mode output LED driver featuring the multiple levels selectable by DIP switch and complies with DALI standard protocol IEC 62386. EUP10D-1HMC-0-120 can be connected to DALI main controller or Touch DIM(Push DIM) to achieve a smooth dimming effect.

#### Product Feature

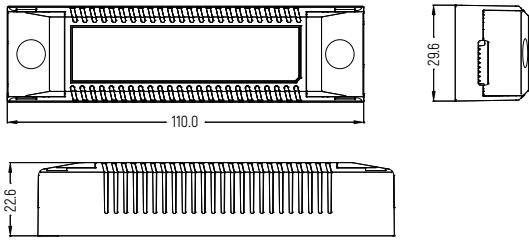
- Single channel output, output current level selectable by DIP S.W.
- Meet DALI Protocol IEC 62386-207
- Support Touch DIM (Push DIM)function
- High efficiency up to 82%
- Built-in active PFC function
- Dimming effect smooth, no flicker
- Protections: Short circuit, over load, no load
- Suitable for indoor LED lighting application, such as down light, spot light, and so on



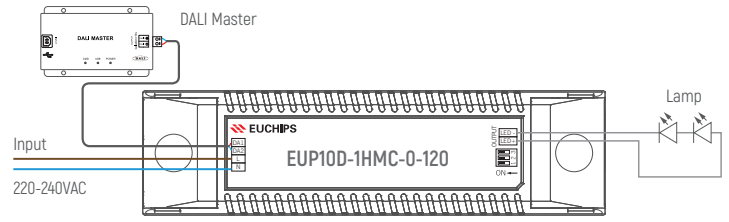
#### Technical Parameters

Model	EUP10D-1HMC-0-120																																								
Input	Efficiency	82%@230VAC, Full load																																							
	Voltage	200VAC-240VAC																																							
	Frequency	50/60Hz																																							
	Power Factor	0.95@230VAC, Full load																																							
	THD	<10%@230VAC, Full load																																							
	Current	0.06Amax@230VAC, Full load																																							
	Inrush Current	cold start,10A(twidth=10us measured at 50% Ipeak@230VACC																																							
Output	Current/voltage/power	120mA/9-45VDC/5.4W 220mA/9-45VDC/9.9W	150mA/9-45VDC/6.75W 250mA/9-40VDC/10W	170mA/9-45VDC/9.9W 270mA/9-37VDC/9.99W	200mA/9-45VDC/9W 300mA/9-33VDC/9.9W																																				
	Ripple Current	<3%																																							
	Channel	1																																							
	Current Tolerance	±5%																																							
	Standby Power	<0.5W																																							
	No Load Output Voltage	50VDC																																							
	Turn On Delay Time	<1s, at 230Vac																																							
<table border="1"> <thead> <tr> <th colspan="2"></th> <th>1</th> <th>2</th> <th>3</th> <th>4</th> <th>5</th> <th>6</th> <th>7</th> <th>8</th> <th>9</th> <th>10</th> </tr> </thead> <tbody> <tr> <td>ON</td> <td>OFF</td> <td>120mA</td> <td>150mA</td> <td>170mA</td> <td>220mA</td> <td>220mA</td> <td>250mA</td> <td>270mA</td> <td>300mA</td> <td colspan="2"></td> </tr> <tr> <td></td> <td></td> <td>9-45V</td> <td>9-45V</td> <td>9-45V</td> <td>9-45V</td> <td>9-45V</td> <td>9-40V</td> <td>9-37V</td> <td>9-33V</td> <td colspan="2"></td> </tr> </tbody> </table> <p>Remark: Function default setting is: 120mA (@switch are all OFF state)</p>								1	2	3	4	5	6	7	8	9	10	ON	OFF	120mA	150mA	170mA	220mA	220mA	250mA	270mA	300mA					9-45V	9-45V	9-45V	9-45V	9-45V	9-40V	9-37V	9-33V		
		1	2	3	4	5	6	7	8	9	10																														
ON	OFF	120mA	150mA	170mA	220mA	220mA	250mA	270mA	300mA																																
		9-45V	9-45V	9-45V	9-45V	9-45V	9-40V	9-37V	9-33V																																
Function	Dimming Mode	DALI / Touch DIM(Push DIM)																																							
	Dimming Range	1%-100%																																							
Protection	No Load	The LED Driver will not be damaged.																																							
	Short Circuit	No Output, recovers automatically after fault condition is removed																																							
	Over Load	Hiccup mode, recovers automatically after fault condition is removed																																							
Safety	Surge	L-N:500V																																							
	Withstand Voltage	I/P-O/P: 1500VAC																																							
	DALI Standrad	IEC 62386-101: 2014, IEC 62386-102: 2014; IEC 62386-207: 2009, DALI 1.0																																							
Others	Working Temp.	-20°C~50°C																																							
	Storage Temp.; Humidity	-40°C~85°C, 20-90%RH																																							
	tc	75°C																																							
	Material	PC																																							
	IP Rating	IP20																																							
	Lifetime	50,000h@tc:75°C																																							
	Warranty Condition	5 years																																							
	Switch Cycle	>100,000 times																																							
	Packing Size	515*235*140mm[L*W*H], 9.5Kg/Cartron/100PCS																																							
	Dimension	110*30*22.5mm(L*W*H)																																							
G.W	60g																																								

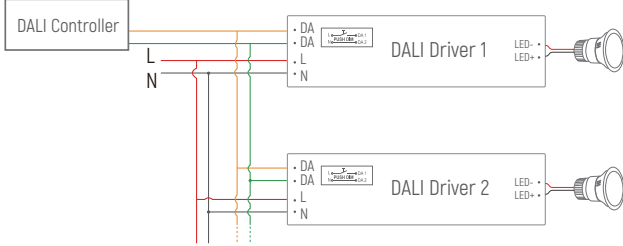
**Dimension(mm)**



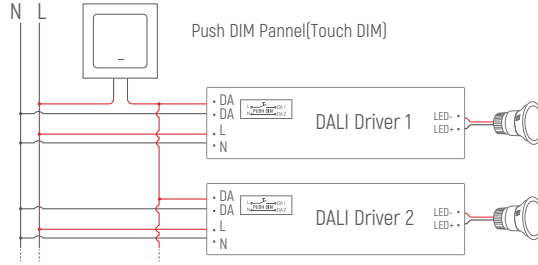
**Wiring Diagram**



**DALI Wiring Diagram**



**Push DIM(Touch DIM) Diagram**

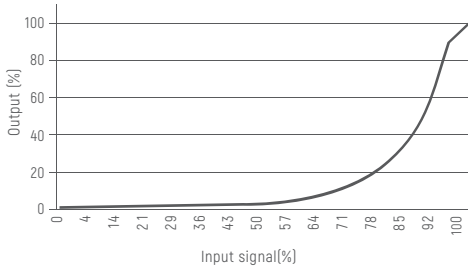


Remarks: use only open push switch (without indicator light). When using synchronous connection, the line length between each device and equipment shall not exceed 20 meters.

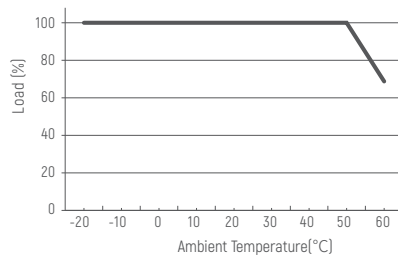
**Push DIM Function**

1. Press the Touch DIM switch for 8s or more, the driver can be controlled via Touch DIM switch.
2. Short press the Touch DIM switch (<0.5s) to control the lamp on or off.
3. Long press the Touch DIM switch (>0.5s) to dim the brightness of light. The dimming direction will change every time after pressing switch.
4. Double-click the Touch DIM switch (<0.3s), then all lamps connected on the device will be set maximum brightness.
5. The brightness adjustment range is 1%-100%, and the light can be turned off through short pressing when doing the adjustment with long pressing Touch DIM switch.
6. With the Power off memory function, the power-down state will be recovered when power on again.

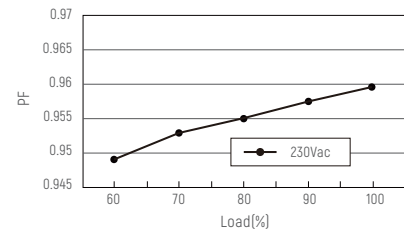
**Dimming Curve**



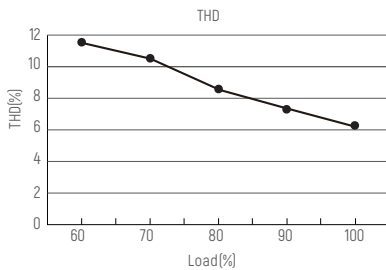
**Derating Curve**



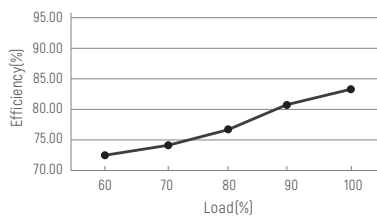
**PF VS Load**



**THD VS load**



**Eff. VS Load**

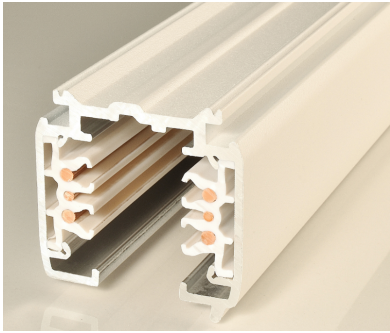


**Cautions**

1. This product should be installed by qualified personnel.
2. This product is non waterproof, need to avoid sun and rain. In case of outdoor use, please ensure it is mounted in a water proof enclosure.
3. Good heat dissipation conditions extend product life. Please install the product in a well-ventilated environment.
4. Please make sure LED power supply output voltage, current is used to meet the product requirements.
5. Please ensure that adequate sized cable is used from the controller to the LED lights to carry the current. Please also ensure that the cable is secured tightly in the connector.
6. Due to safety concerns, PVC or rubber cord of 0.75- 1.5mm<sup>2</sup> is recommended for input and output terminal(s) (excluding signal terminals). Flat power cord is not suitable. Ensure all wire connections and polarities are correct before applying power to avoid any damages to the LED lights.
7. In case of malfunction, do not repair it yourself.

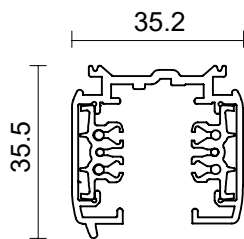
※ The contents of this manual are updated without prior notice. If the function of the product you are using is inconsistent with the instructions, the function of the product shall prevail. Please contact us if you have any questions.

## Datasheet | 3 Circuits dali track-1M (1000mm)



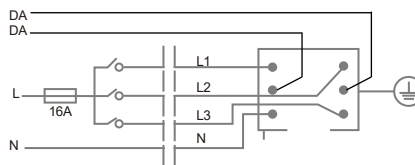
Product Code	PRO-0610-W
Color	White RAL 9010
Product Code	PRO-0610-S
Color	Silver RAL 7040
Product Code	PRO-0610-B
Color	Black RAL 9011
Main materials	Copper+Aluminum
Inner box/Outer box	1/6 pcs
Net weight per piece	960 g
Rated voltage per circuit	220-250V/10A (EU) ,120V/20A (US)

### Dimensions

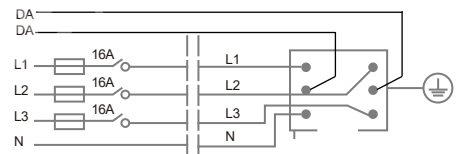


### Connecting Diagram

#### 3 circuits dali track system

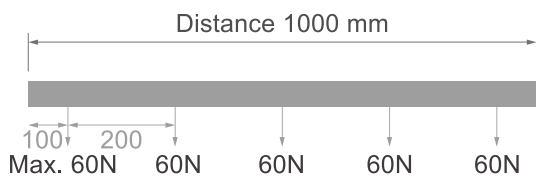


1 phase 230V 16A Max.



3 phase 230V 3\*16A Max.

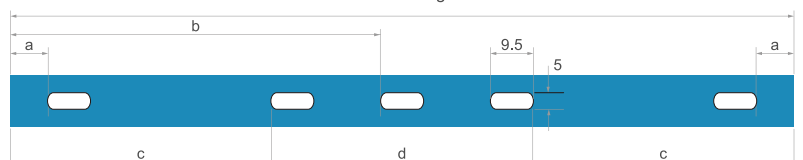
### Mechanical load diagram



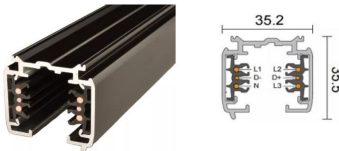
### Fixing point dimensions

L / mm	a / mm	b / mm	c / mm	d / mm
1000	125			
2000	125	995		
3000	125		914	1172
4000	125		1247	1506












L=Track length



**6 wires 3-circuit Triac/Phase/DALI Track Rails - Surface Mounted | Suspended**

image	code	description	
	PRO-0610	L1000mm Surface Mounted   Suspended track rail	
	PRO-0615	L1500mm Surface Mounted   Suspended track rail	
	PRO-0620	L2000mm Surface Mounted   Suspended track rail	
	PRO-0630	L3000mm Surface Mounted   Suspended track rail	

**Connectors for the surface mounted and suspended version track rails**

	PRO-D631L/R	power feed	
	PRO-0432	end cap	
	PRO-D633	I straight connector invisible version	
	PRO-D634	I straight connector visible version	
	PRO-D635L/R	L connector fixed version	
	PRO-MD638	L connector adjustable version	
	PRO-MD635	connector flexible version A	
	PRO-D636L1/R1/L2/R2	T connector fixed version	
	PRO-MD636L/R	T connector adjustable version	
	PRO-D637	+ connector	
	PRO-D639	connector flexible version B	
	PRO-EZ0447	Buckle and Suspension Rod (M6xL1000mm)	
	PRO-EZ0448	Buckle and the Suspension Wire (L1500mm)	
	PRO-EZ0448	Buckle and the Suspension Wire (L2000mm)	
	PRO-EZ0448	Buckle and the Suspension Wire (L3000mm)	
	PRO-EZ0448	Buckle and the Suspension Wire (L4000mm)	
	PRO-EZ0449	Buckle and the Suspension Wire (L2000mm)	
	PRO-EZ0449	Buckle and the Suspension Wire (L3000mm)	
	PRO-EZ0449	Buckle and the Suspension Wire (L4000mm)	